

# PRODUCT DATA SHEET



## VELOCITY 2.0 BLACK LOW S3S ESD FO HRO SR/ S3 ESD HRO SRC

Size: 39-48 EN ISO 20345:2022/ Size: 36-38 EN ISO 20345:2011

Art. No. 64.384.0



**Protection:** fiberglass toe cap and flexible FAP® midsole

**Plus:** ESD, non-metallic, toe cap protection, heel support, quick lacing system, extra pair of laces in the box, DGUV 112-191

**Upper:** high quality smooth full leather with TPU strengthening

**Lining:** BreathActive functional lining

**Footbed:** evercushion® BA

**Sole:** rubber sole MOTION IMPULSE - 300°C heat and slip-resistant rubber outsole with IMPULSE.FOAM® midsole in two different densities for maximum cushioning, stability and comfort

**Colour:** black

**Sizes:** 36 - 48

Also available:



VELOCITY 2.0 YELLOW MID  
633880

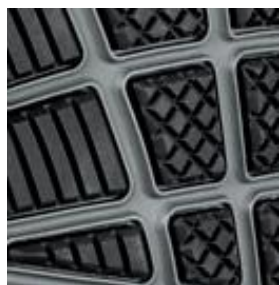


VELOCITY 2.0 BLUE LOW  
643850



### RUBBER SOLE MOTION

The 300°C heat resistant HRO rubber outsole is inspired by the latest running shoe technology. The anti-slip sole profile with its diagonal flex grooves ensures optimum flexibility and maximum traction (SRC).



### TORSION CONTROL ELEMENT

The TPU torsion control element in the middle of the sole supports the natural flexing action of the foot while walking and provides a better support and stability for the feet.



### IMPULSE.FOAM® midsole

Ultimate comfort during long working days. The innovative IMPULSE.FOAM® midsole in two different densities reacts to each of your steps with an energy impulse. Thereby the IMPULSE.FOAM® does not only return the energy, but also provides maximum cushioning and excellent stability.



### UPPER

The upper made of robust full leather is resistant to abrasion. It offers high protection from penetrating moisture and is easy to clean. The TPU strengthening elements provide extra stability and set new accents.

