

VECTOR BLUE LOW S3 FO SR

Art. No. 64.732.0

EN ISO 20345:2022+A1:2024



- Protection:** anatomically shaped steel toe cap with extra toe clearance and steel midsole
- Plus:** breathable functional lining, comfortably padded collar and dust tongue
- Upper:** soft suede leather with abrasion-resistant sandwich mesh
- Footbed:** comfit® VIVA
- Sole:** profiled, cushioning, abrasion- and slip-resistant DUO-PU sole
- Colour:** black-blue
- Sizes:** 35 – 48

Also available:



AXIS GREEN LOW
647350



VECTOR BLUE MID
637320



STEEL



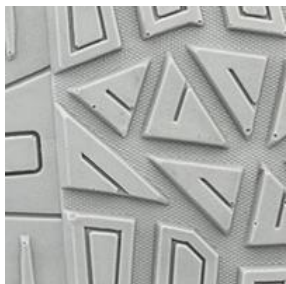
STEEL MIDSOLE



SLIP RESISTANT



UNISEX



ESSENTIALS+ OUTSOLE

The sporty outsole offers perfect ground contact and non-slip walking thanks to the specially arranged profiled elements. Flex grooves ensure optimum mobility and also save weight. The distinctive heel provides an excellent grip on ladders.



COMFIT®VIVA

Anatomically moulded footbed in soft EVA for shock-absorbing effect to protect joints, muscles and bones. Ergonomic longitudinal arch support for optimum stability, while the nubbed ball of the foot massages the forefoot with every step. Perforation increases breathability- All for a comfortable fit.



CUSHIONING MIDSOLE

The soft midsole optimally absorbs the high forces of a footstep and perfectly combines stability and flexibility.



PROTECTION

Tough inside - sleek on the outside: compact metallic toe cap design for a sporty look and metallic antiperforation protection.