

DALTON BLK/YELLOW LOW S3L ESD FO SR

Art. No. 64.881.0

EN ISO 20345:2022+A1:2024



- Protection:** fiberglass toe cap and flexible FAP[®] midsole
- Plus:** metal free, breathable functional lining, comfortably padded collar and dust tongue
- Upper:** durable 3D-Mesh and FITFRAME[®] -Elements
- Lining:** breathable functional lining
- Footbed:** anatomically formed and breathable EVA footbed
- Sole:** flexible, profiled, slip and abrasion resistant DUO-PU outsole
- Colour:** black-yellow
- Sizes:** 36 - 48

Also available:



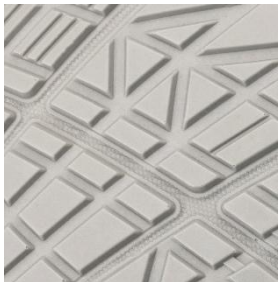
CLIFTON LOW
648700



DALTON BLK/YELLOW MID
638810



*in progress



SLIP-RESISTANT OUTSOLE

The abrasion-resistant, cushioning DUO-PU sole is particularly characterized by its flexibility and slip resistance. The sole profile has wide flex grooves and differently designed profile elements for excellent grip on different floors, especially on industrial floors.



FAP[®] - FLEXIBLE ANTI-PERFORATION

FAP[®] is a non-metallic material, especially developed for safety footwear, made of multiple textile layers of extremely tearproof fibers. The FAP[®] midsole offers greater comfort, flexibility, cold insulation, humidity absorption and shock absorption to the wearer.

COMFIT[®] VIVA

The anatomically shaped footbed made of soft EVA has shock-absorbent properties that improve the protection of joints, muscles and bones. The ergonomic longitudinal arch support delivers optimized stability, while the textured section on the ball massages the front of the foot with every step. The perforations improve breathability – to pleasantly optimize comfort.



CUSHIONING MIDSOLE

This soft PU midsole optimally cushions the high impacts of walking and combines perfect stability with flexibility.