

# PRODUCT DATA SHEET

Article No. 63.012.2 - **CONDOR BROWN MID** S3 ESD SRC



Protection: steel cap and flexible FAP® midsole

Plus: ESD

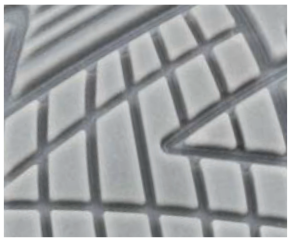
Upper: oiled nubuck leather

Lining: BreathActive functional lining

Footbed: evercushion® pro ESD

Sole: REBOUND - Compact PU outsole with midsole of continuously high performance EFFECT.FOAM® for excellent cushioning and energy return

Sizes / Width: 39 - 47 / 11



## COMPACT PU OUTSOLE

Due to its high material density, the slip resistant outsole (SRC) wears out less and prolongs thus the life of the shoes. The striking profile which is divided into different segments, offers maximum support and grip on uneven as well as wet and slippery surfaces. The wide cleats at the outer edge ensure a high level of stability.



## FAP®-Flexible Anti Penetration

The flexible anti-penetration midsole made out of ceramic-coated fibers, protects the feet completely from penetrating objects.

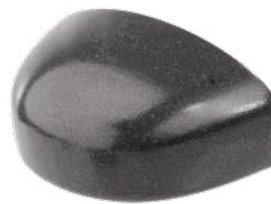


## EFFECT.FOAM®

Tireless comfortable.

- 60% energy return
- 47% less impact on bones and joints\*
- extremely powerful and light
- permanently high level of comfort for fatigue-free work

\* Dynamic energy absorption reduces the impacts to 1.6KN, the average for safety shoes is 3.0KN.



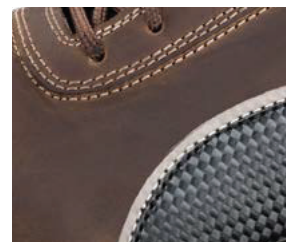
## Steel toe cap

The spacious fit ensures a pleasant comfort.



## evercushion® pro ESD

The soft PU material of the evercushion® pro ESD insole offers a high cushioning during the whole footstep, therefore the pressure zones are relieved. The durable fabric cover and the perforated area at the forefoot ensure breathability and comfort. Electrostatic charges will be derived from the body.



## Upper

Oiled nubuck leather has the same velvety character like nubuck leather, but it's smoother and offers more protection against moisture penetrating. Furthermore it also prevents premature ageing by low maintenance.