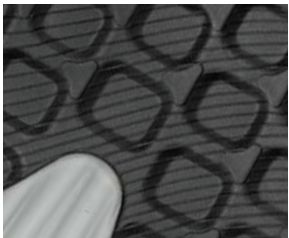


PRODUCT DATA SHEET

Art. No. 64.454.0 - **CHARGE BLACK LOW** S1P ESD HRO SRC



- Protection: fiberglass cap and flexible FAP®lite midsole
- Plus: ESD, non-metallic, TPU toe cap and heel protection, TPU eyelet element for additional reinforcement
- Upper: SAFETY KNIT®
- Lining: BreathActive functional lining
- Footbed: evercushion® CUSTOM FIT MID
- Sole: rubber sole MOTION CL - 300°C heat and slip-resistant rubber outsole with IMPULSE.FOAM® midsole and POWER PLATE element for maximum cushioning, stability and comfort
- Sizes: 36 - 47



Rubber Outsole MOTION CL

The slip-resistant (SRC) and profiled rubber outsole is 300°C heat-resistant (HRO) and based on the latest running shoe technology.



Fiberglass toe cap and FAPlite midsole

The high-tech fiberglass toe cap offers optimized protection and more freedom of toes. The new FAP®lite midsole is made of non-metallic, extremely tear-resistant textile fibres. It is breathable, durable and offers a high flexibility with a lower weight.



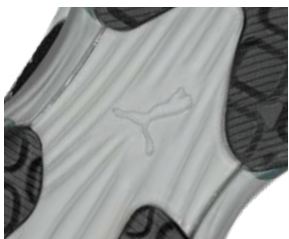
IMPULSE.FOAM midsole

Ultimate comfort during long working days. The innovative IMPULSE.FOAM® midsole reacts to each of your steps with an energy impulse. Thereby the IMPULSE.FOAM® does not only return the energy, but also provides maximum cushioning and excellent stability.



evercushion® CUSTOM FIT MID

Thanks to the evercushion® CUSTOM FIT insoles, the safety shoes adapt optimally to the needs of the feet and significantly increase comfort. The highly breathable foam offers excellent cushioning properties.



POWER PLATE

The innovative POWER PLATE element even improves the cushioning of our IMPULSE.FOAM® sole technology, optimizes the energy return and ensures best possible comfort. POWER PLATE supports the natural rolling movement of the foot and gives highest stability and control in every situation.



FUSE.TEC®

The seamlessly attached, flexible FUSE.TEC® elements offer a high stability and resistance. They set new accents in functionality and design. The light textile fabric is particularly robust, tear-resistant and breathable.